



Crew Chief MEETING Notes

NOLA

October 12-14, 2018

From: Race Director: Steve Oseth
Clerk of Course: Pat di Natale
Technical Delegate: Buddy Fey

Practice starts: Location to be announced at 1st Drivers' Meeting
Safety Car line 1: See Driver Notes
Safety Car line 2: See Driver Notes
Access to the circuit: For practice, qualifying and the race is from the pre-grid.

Regulations

Competitors and Drivers are reminded that it is their responsibility to read the 2018 F3 Americas Championship Sporting Regulations and Event regulations and comply with them.

See Article 24.4 Tires – Cars must start 1st dry qualifying session, on new and unused, declared tires. Rain tires must be re-declared for each event. Pirelli allocates one set of rain tires per car per event. Teams must pre-order additional tires.

Practice tires must be marked tires from **a previous event**. First time entries are allowed 3 new front tires and 3 new rear tires for practice.

See Article 24.5 – You must see the Technical Director for approval of a replacement tire.

See Article 26.7 Transponders

Cars without properly operating transponders will not receive official times. Transponder tester will be available in pit lane.

See Article 26.9 Covers – **No part of the car may be covered except as identified in this Article. Please review.**

See Article 29.4 Fuel Handling

Please read and understand.

Track available 100 octane unleaded must be used. It will be supplied by the track fuel supplier in drums to be pumped out by the fuel supplier. Expected quantities as given by the teams. Credit cards accepted.

See Article 42.1 Parc Ferme

Underneath the tech awning is considered part of Parc Ferme.

Article 26.8 – video compliance

In an effort to provide timely decisions, the above video compliance requirements have been developed. Please read and understand fully. Penalties will be issued for out of compliance videos.





Pit Lane – Pre-grid is located at the far end of the paddock, nearest the control tower. See attached map. Please keep equipment clear.

Podium – Top 3 cars to podium. Drivers out and team to move car to tech without delay.

Parc Ferme - Parc Ferme conditions exist when the checkered flag is displayed for qualifying and races. Top 3 cars are to report directly to series tech area. Others required to report to tech area will be informed by Technical Delegate during session or announced over series frequency. All other cars may return to their paddock area but must not enter their canopy. One crew member may remove video card from camera. No one is permitted to touch cars until after Parc Ferme conditions are lifted.

Pit Box Locations:

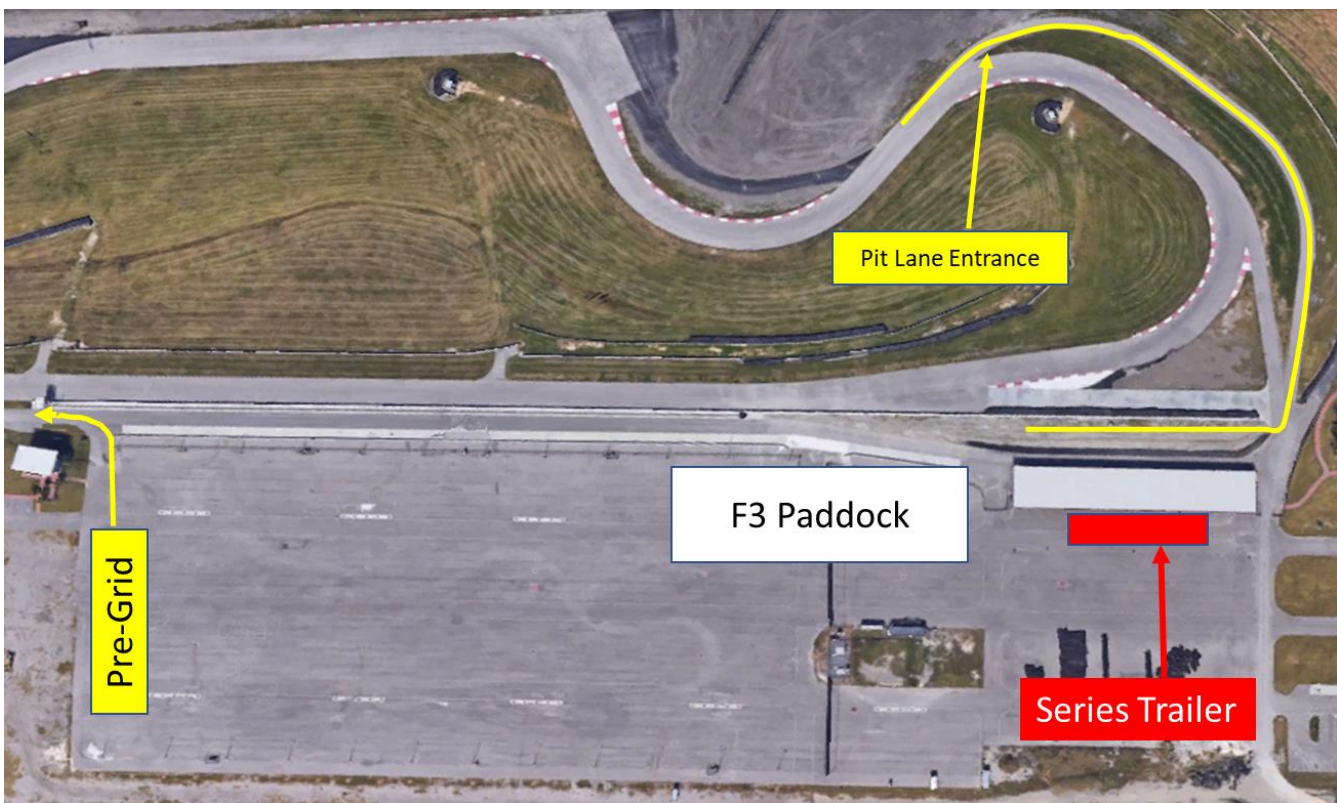
Pit Box 1	Pit Out & Start Lights		Rick Wong & Bob Russo
Pit Box 2	Start Box for Standing Start Practice		
Pit Box 3	Staging Box for Standing Start Practice		
Pit Box 4	Car #8	Abel Motorsports	Tim Turner
Pit Box 5	Car # 51	Abel Motorsports	
Pit Box 6	Empty		
Pit Box 7	Car # 9	Global Racing Group	Andrew Hughes
Pit Box 8	Car # 24	Global Racing Group	
Pit Box 9	Car # 66	Global Racing Group	
Pit Box 10	Empty		
Pit Box 11	Car # 61	Southern Motorsports	Dave Kettler
Pit Box 12	Empty		
Pit Box 13	TBA	TBA	Steve Roberts



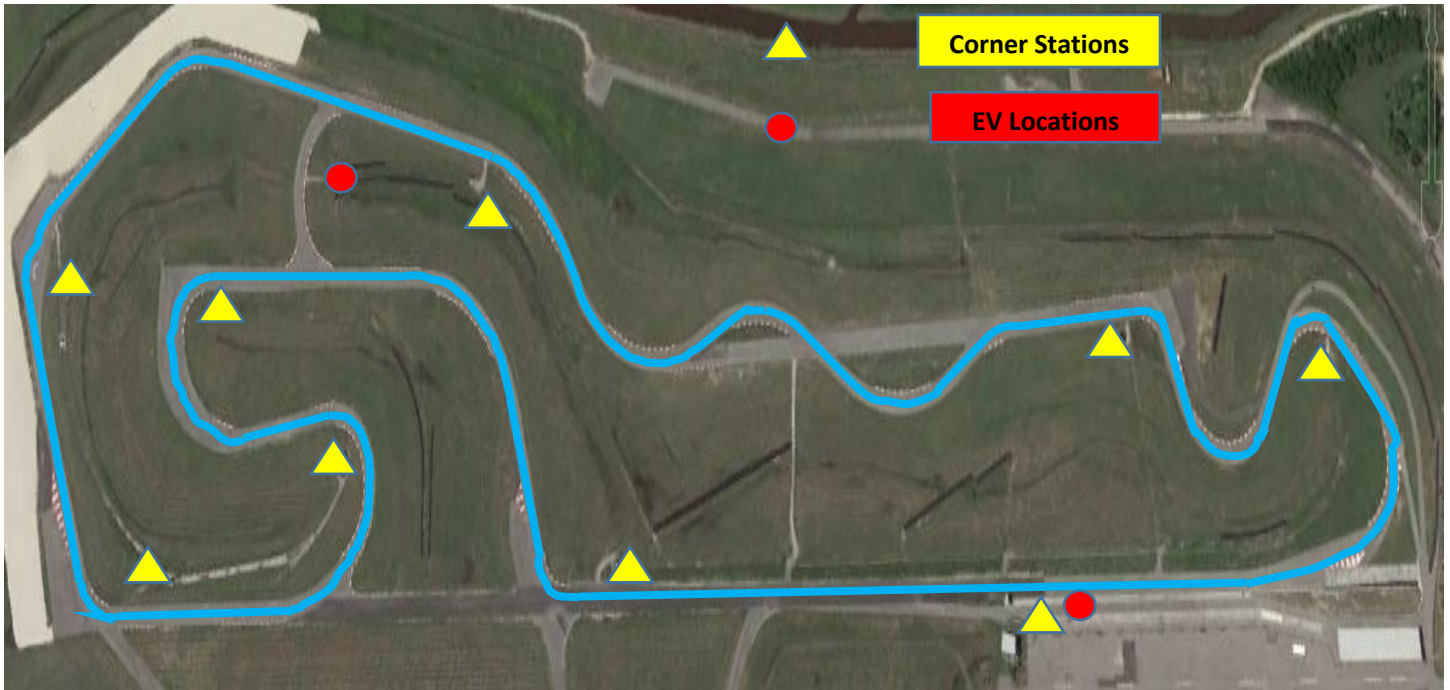
General Notes

- Please enter the series trailer from the back door.
- No shorts allowed in pit lane during any official F3 session.
- No smoking or vaping allowed on pit lane at any time.
- If a F3 staff member notifies team of black flag it will be considered the same as displaying such flag.
- No team personnel are permitted at outer pit wall for starts. 1 team member per car is permitted to set car in start box and then return to pit box.
- All spills must be cleaned up or track fines may occur.
- Pit assignments will be distributed at Crew Chief Briefing.
- Official scales and measuring tools are available during the times posted on the schedule, unless closed for Parc Ferme. **Do not drive on scales.**
- After each on track session, teams must monitor Race Control frequency until investigations are announced.

Paddock Plan



Safety Locations



Maps:

