



## Drivers' Meeting Notes

NOLA

October 12-14, 2018

From: Race Director: Steve Oseth  
Clerk of Course: Pat di Natale

---

Practice starts: Location announced at 1<sup>st</sup> Drivers' Meeting  
Safety Car line 1: See attached map  
Safety Car line 2: See attached map  
Access to the circuit: For practice, qualifying and the race is from the pre-grid.

### Regulations

Competitors and Drivers are reminded that it is their responsibility to read the 2018 F3 Americas Championship Sporting Regulations and Event regulations and comply with them.

### Driver's Meetings

- 1st Drivers meeting – Friday October 12 @ 11:30 AM at Series Trailer
- 2<sup>nd</sup> Drivers meeting – Saturday October 13 @ 10:00AM at Series Trailer

**See Article 22.3 - Blend Line** - Cars entering or leaving pit lane must do so without endangering or hindering other participants. Please be aware of the pit out blend line.

### **See Article 36. Starting Procedure - Race**

- Pre-grid closes 5 minutes prior to the formation lap.
- Pre-grid – Cars will be placed in qualifying order single file before being released on track.
- Cars will be released from pre-grid between 5 – 10 minutes **before scheduled start of the race.**
- Safety Car will lead cars around on the formation lap and enter the pits. Do not pass the Safety Car. If the Safety Car lights **stay on** you must follow the Safety Car. If the Safety Car lights go out – proceed to starting grid.
- Cars must be slowed down to a safe speed by the time they reach 1<sup>st</sup> safety car line and proceed to your starting grid position on the front straight.
- Start boxes will be staggered.
- If a car is in your spot take the next one available in the same line.
- If you are delayed on formation lap – you may **safely** get your qualifying position back but must be in position by 1<sup>st</sup> Safety Car line or you must start from pit lane. Your spot will be left open.
- If a car is delayed you must stay in your qualifying position. Do not move up into open spot.
- If you park incorrectly do not reverse on the grid.
- First green lights signify that the starting grid is full.





- Red lights will start after all available cars are in position – 5 Red lights come on in 1 second intervals. When all 5 lights turn off race begins – will be between .5 and 4 seconds after all red lights are illuminated.
- Yellow lights from the starting light board are the only signal of an aborted start. DO NOT MOVE. Start will now become a rolling start. Wait for the green lights and then form up in qualifying order 2x2 behind Safety Car. If car is delayed, their spot stays open. Do not move up.
- Once the lights have begun raise your arm if you have a problem. Start will be aborted if possible.

**Restarts** - Once the lights on the safety car are extinguished, it may accelerate away from the leader. At this point the leader may not fall below “lights on safety car speed” and may accelerate as long as the safety car is not passed before the first safety car line.

In order to avoid the likelihood of accidents before the safety car returns to the pits, from the point at which the lights on the car are turned out drivers must proceed at a pace which involves no erratic acceleration, braking, weaving or tire warming nor any other maneuver which is likely to endanger other drivers or impede the restart. Passing may commence at the display of the green flag.

### General Notes

**Disabled on track** – Stay belted in your car until Safety arrives or instructed by corner marshal. *Visor up* signals driver is OK. If you encounter any mechanical problem, which might cause oil or water to be deposited on the track, please leave the circuit when it is safe to do so and in every case keep clear of the racing line. Please be attentive to EV workers who are trying to help move your car.

**Practice Starts** - Burn outs and practice starts are NOT allowed in the pit lane unless you are performing practice starts in designated area.

**Qualifying order** - will be determined from combined official practice session times.

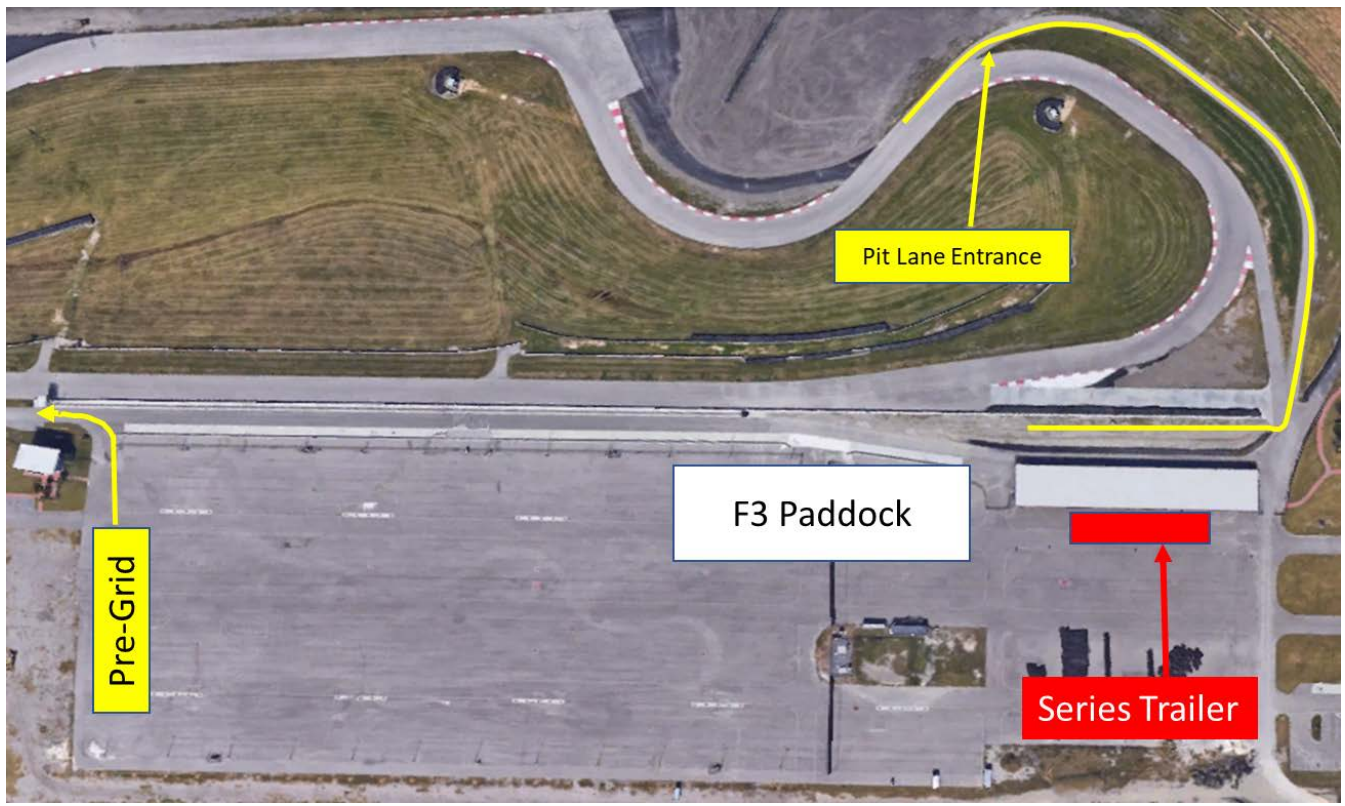
Be aware of the gravel trap on driver’s left at Turn 6. Depth and material, general lack of access and traction will make recoveries from this location difficult.

**Mirrors** – Drivers are responsible for knowing where cars are around them. Proper use of mirrors include leaving pit lane, when exiting a corner, before a braking zone and prior to initiating a pass.

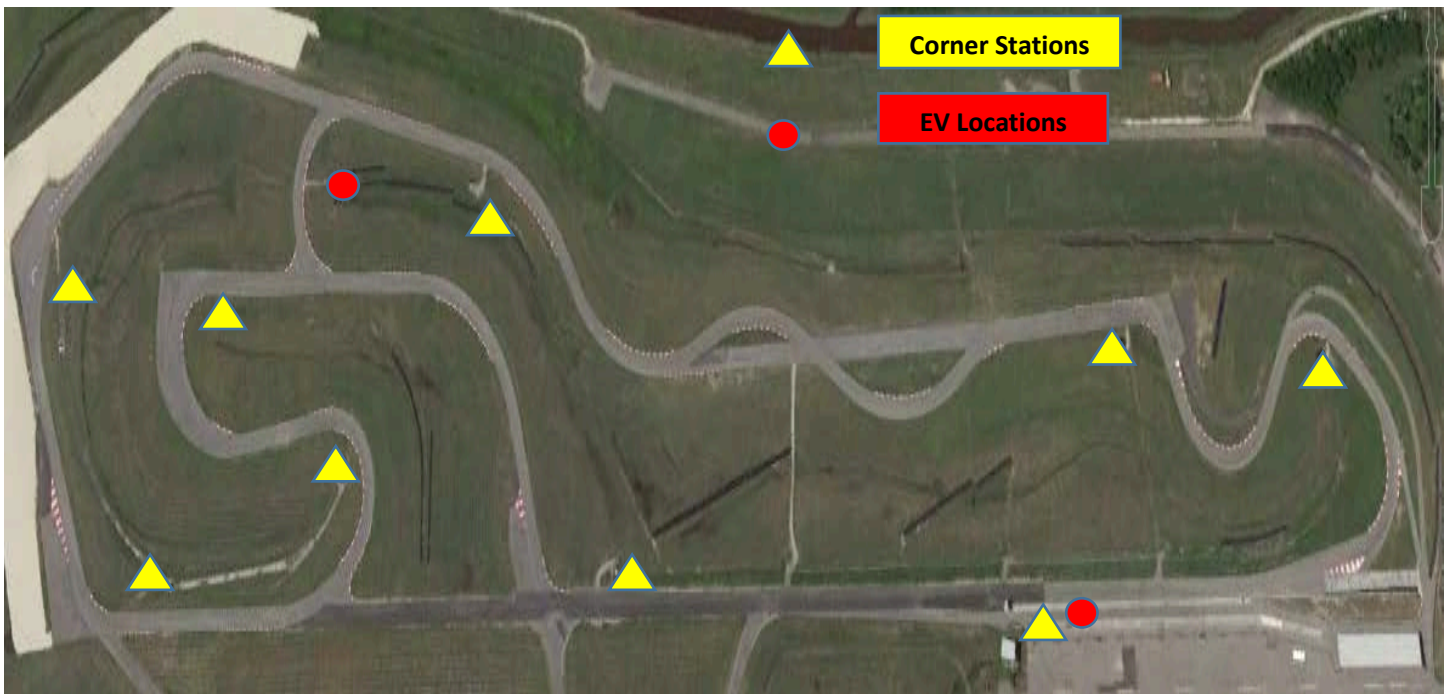
**Call All radio frequency** - All cars and 1 member of each team are required to have the series “Call All” frequency. Race Control will announce FCY, red flags, start light technical failure and race finish under yellow over this channel.



Paddock Plan



Safety Locations



Pit entry blend line and 1<sup>st</sup> Safety Car line



Pit exit blend line & 2<sup>nd</sup> Safety Car line



Safety Car lights out



MAPS

